



en 4000 X

One cockpit.
Thousands of possibilities.

Reconfigurable SEP / MEP / JET
EASA FNPT II MCC / FAA AATD



entrol

Since 2005

Since I started the company with my brother in 2005, our goal has always been to provide schools with the best flight simulators.

That goal is more alive than ever, and this is why we have developed our en-4000x: to enhance your training and optimize your costs.

Thanks to its SEP / MEP / JET cockpit and G1000 and A320 avionics, you can provide all your training in a single simulator.

Visit our showroom in Madrid and experience it for yourself.

In the meantime, please contact us for more information.

We look forward to seeing you soon.

Yours sincerely,



Luis Olarte
CEO and Founder



This is the en-4000x

Reconfigurable

- SEP
- MEP
- JET

Certified


- EASA FNPT II MCC
- FAA AATD
- PBN

Versatile

- G1000 replica
- JET based on A320
- Analog cockpit


Reliable

- Easy to maintain
- Quick configuration change
- Entrol's long-term support



Realistic airliner environment for APS MCC

- Procedures based on A320 FCOM
- Dual MCDU
- Full-scale overhead, pedestal and glareshield
- EGPWS
- TCAS II
- Windshear warning system
- Additional sidesticks



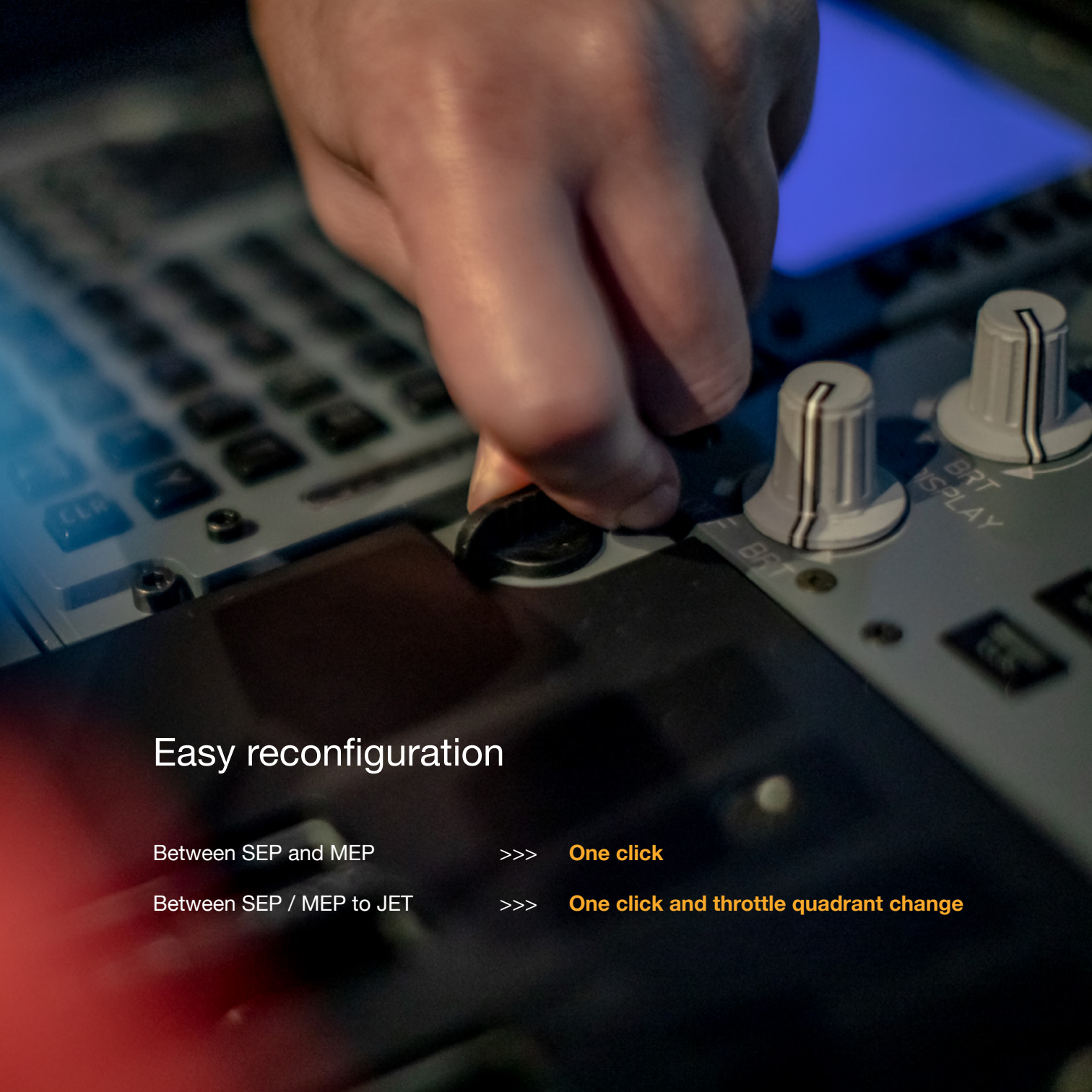
All-glass SEP / MEP cockpit to enhance your ATPL courses

- G1000 replica
- TAWS and TAS
- Weather radar
- Synthetic vision

Transition from analog to glass

- Analog cockpit
- Replica of actual indicators
- Navigation map





Easy reconfiguration

Between SEP and MEP

>>> **One click**

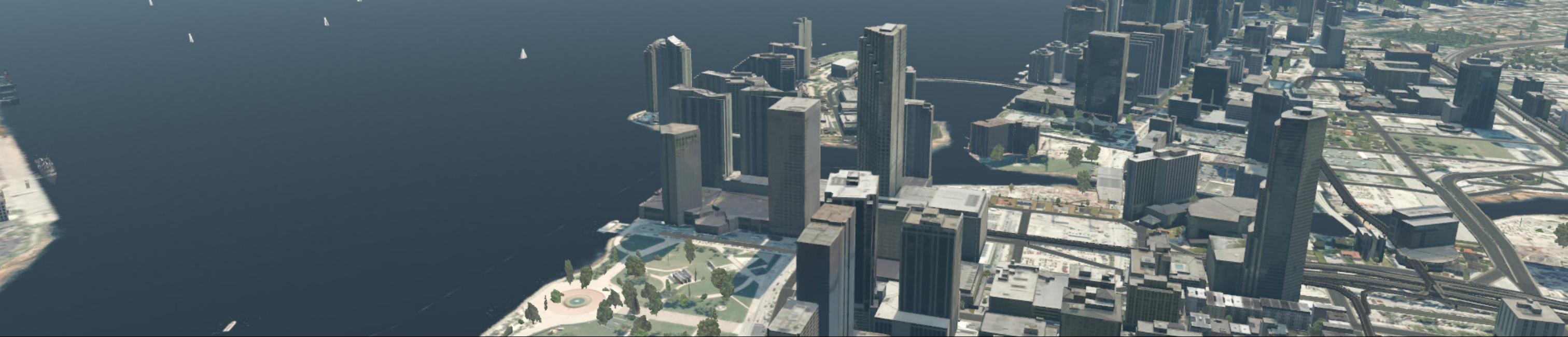
Between SEP / MEP to JET

>>> **One click and throttle quadrant change**

Immersive visual system

- Cylindrical dome
- Three Full HD projectors
- FOV of 180° x 40





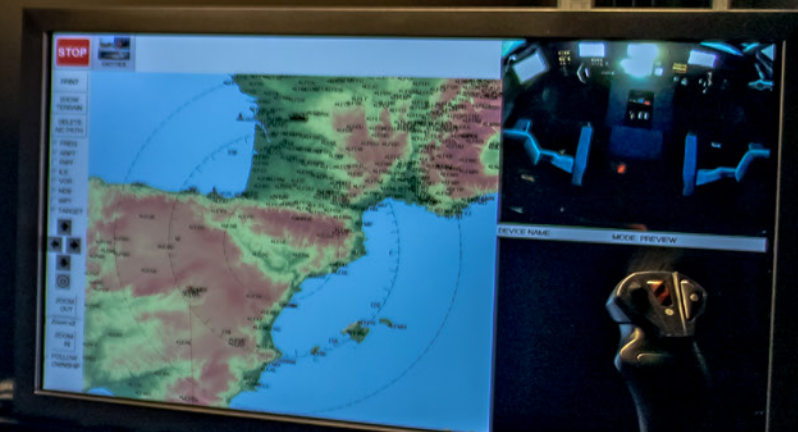
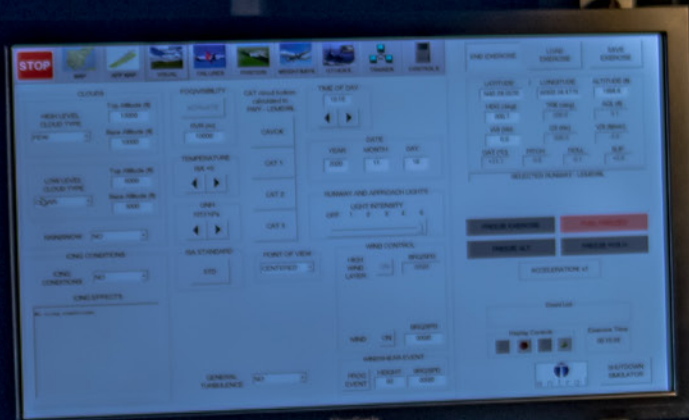
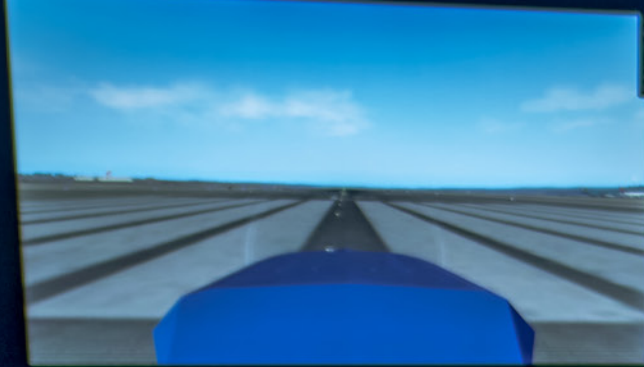
entrol HD visual

- Worldwide terrain scenery
- Customer-defined airport database
- Global navigation database covered by NAVBLUE
- Update of navigation database each 28 day AIRAC cycle
- Additional custom airports



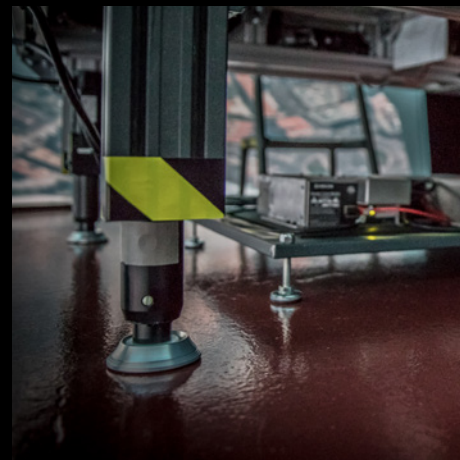
Full control of the simulation

- Instructor-friendly IOS interface
- Enclosed area to avoid distractions
- Remote control for on-seat training
- Additional debriefing station



Additional options

- Vibration system
- A320-based sidesticks
- A320-based RMP and ACP panels
- Debriefing Station
- Cockpit windows
- Smoke machine
- iPad with IOS remote control and ForeFlight integration
- Additional generic and specific airports



Turnkey solution

Support during simulator production

- Provide all necessary documentation
- Preliminary MQTG
- Factory acceptance

Shipping and installation

- Shipping included in the price
- Installation by entrol's personnel
- On-site acceptance test

Training of customer's technicians

- Panels replacements
- Warping and blending
- Quarterly maintenance and QTG's
- Reporting and bug tracking

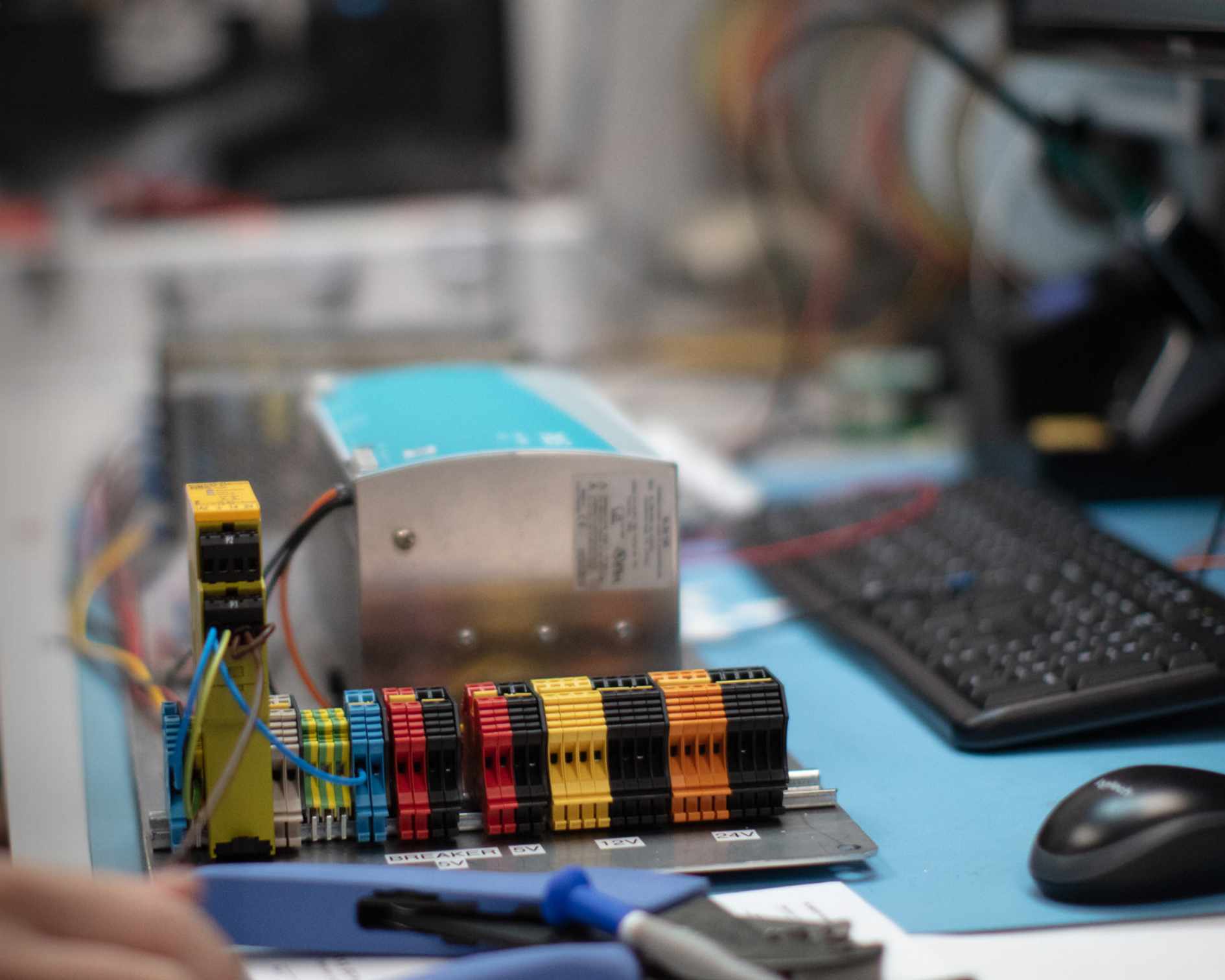
Assistance to certification

- On-site support on initial certification
- Support to answer CAA's report and discrepancies

Maintenance

Long-term maintenance service

- 24-month warranty
- Remote connection for updates
- Contact with entrol by telephone and email
- Update of airport and navigation database
- Spare parts service
- Obsolescence management



showroom

We have one of the largest showrooms in Europe with fixed-wing and helicopter simulators, located just 20 minutes from Madrid-Barajas International Airport.

See

Come and fly our en-4000x.

Touch

We provide each visitor exclusive use of the showroom, so take your time to test everything.

Book a demo

Contact us to arrange your visit.





entrol

Since 2005

Over 70 simulators installed
in more than 20 countries.

www.entrol.net

